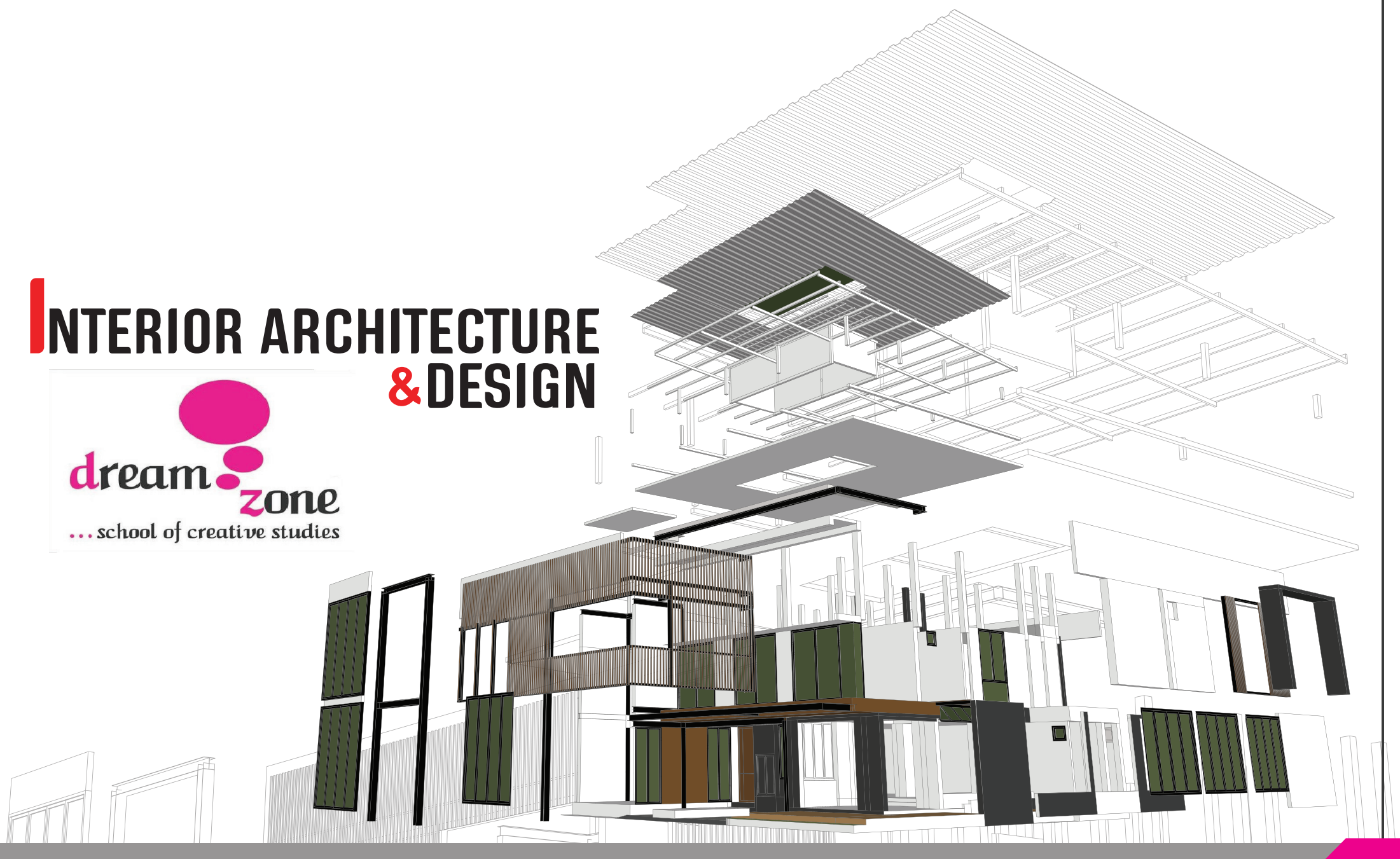


# INTERIOR ARCHITECTURE & DESIGN

**dream zone**  
... school of creative studies



ARCHITECTURE

## I'm interested in IAD, but I,m not creative or talented. Can I join the course?

NO one is "born" designer! Design Skills are acquired through good training and enthusiastic learning . Do not hesitate ! You can become a great designer!

## What kind of teaching strategies are adopted this course?

The course presents various aspects of IAD to students in a studio - based learnig environment.The classes are a mixture of lecture and practice sessions.

### We take the following approach

- . Motivate students to learn, either independ entaly or in groups
- . Encourage exploration of idea and research.
- . Provide exposure to appropriate cognitive and professional skills.

## How Is the course curriculum structured?

The curriculum is developed in association with leading interior design firms in the country, after a detailed research of costomer's unment needs.

### The curriculum

- . Follows a logical sequence
- . Is challenging but even-paced
- . Has equal number of compulsory practice sessions to reinforce through learning.

## What makes Dream Zone IAD Course special?

**References Books:** Refer 600 pages (2 volumes) of world class reference material developed by Dream Zone ,in Association with top interor designers in India.

**IAD Resource Centre:** A Good collection of books ,refernceguides, supplier catalogues, material samples, CD Roms...

**Workshop:** A self contained workshop for model making.

**Design Forum:** Invited Lectures from leading architects, interior designers and manufactures to updates you with the latest trends and techniques.

**IAD Resource Database:** An up-to-date database of prominant contractors, architects Interior designersand suppliers

**Faculties:** All faculties are qualified architects /interior designers.

**Project Planning & Managements:** Basics of project planning & management are taught as part of the course.

## Are the Faculties good enough?

- . **Faculties:** All faculties are qualified architects /interior designers.
- . **Project Planning & Managements:** Basics of project planning & management are taught as part of the course.

## Interior Design

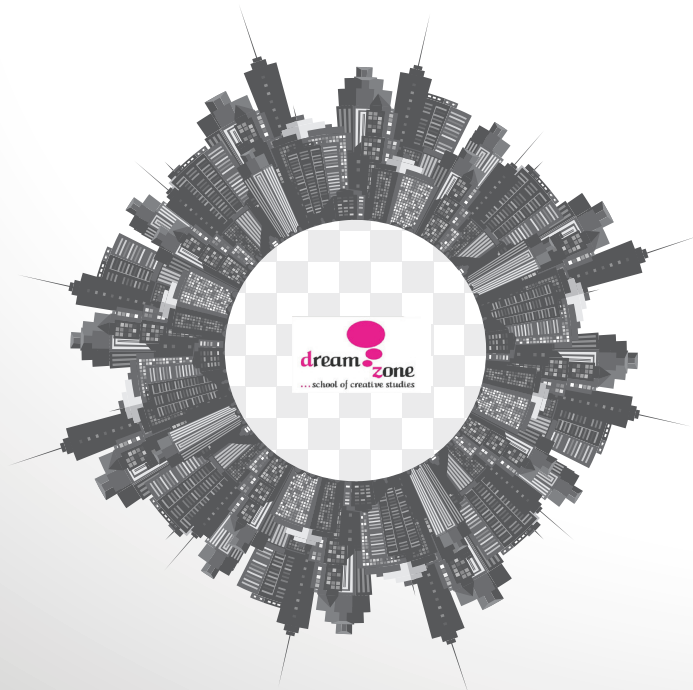
Interior design is the creation and organisation of interior spaces to perform a specific function within an architectural environment.

An interior is a space which is enclosed by walls, floors, and ceilings. It has entries, exit, opening such as doors and windows etc. These enclosing elements may be composed of a number of materials and countless shapes.

To design to conceive, envision, plan and compose things.

The design process includes communicating the design concepts to client and other professionals engaged in implementing the design, appropriate use of materials that result in functional, aesthetic and psychological enhancement of an interior space.

Interior design is a specialized branch of Architecture. The best building and the best interiors will have no obvious disparity between the elements that make up the totality. That is why world wide this discipline is well known as "Interior Architecture & Design (IAD)"



## Need for Interior Designers

Before the 20th century, the interiors made considerably simpler demands on designers in terms of functionality. By and large, technologies and processes of each profession by themselves were less categorised and specified. Hence, in most cases the architects themselves played the role of an interior designer.

However, over the years the practice of interior design witnessed a steady development of specialization. It is no longer possible for an architect or an interior designer to be an expert in all the aspects that make up a building.

While architects usually orient themselves with the overall design of buildings, interior designers are concerned with the more intimately scaled aspects of design, specific aesthetic, and the functional and psychological aspects of the overall design.





# Interior Architecture & Design

## Course Curriculum

### Module - 1

#### • Introduction to Interior Architecture & Design

- Importance and need for Interior Architecture and Design

#### • Basic design Elements

- Form
- Shape
- Color
- Texture
- Light

#### • Design Principles

- Proportion
- Scale
- Balance
- Harmony
- Unity & Variety
- Rhythm
- Emphasis

#### • Spatial Organization

- Centralized Organization
- Linear Organization
- Radial Organization
- Clustered Organization
- Grid Organization

#### • Practices

- Compositions using Basic design principles

#### • Projections

- Orthographic Projection
- Axonometric Projection
- Oblique Projection

#### • Perspective

- One-point Perspective
- Two-point Perspective
- Three-point Perspective

#### • Drawing

- Free hand Sketching
  - Pencil Rendering
  - Pen Rendering
- Drawing Equipments
- Lettering
- Scales
- Geometrical Constructions
- Dimensioning
- Plan, Elevation and section

#### • Practices

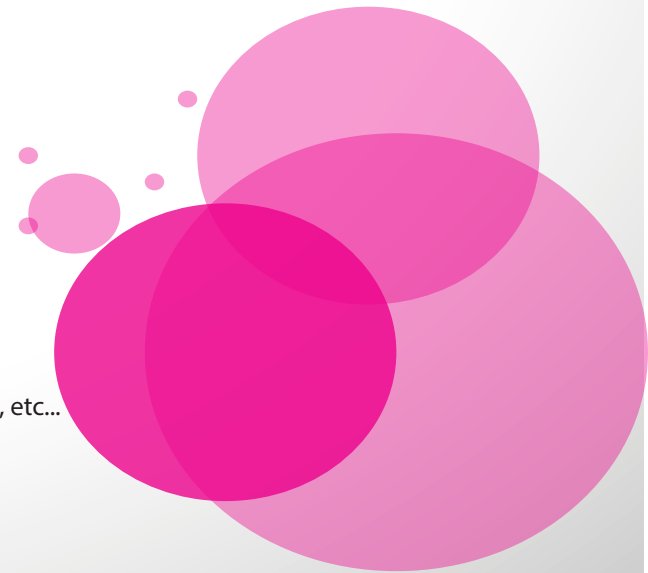
- Exercise on Free Hand drawing
- Exercise on Lettering, Scales, Plans
- Exercise on Projection, perspective

#### • Building Materials

- Stone
- Clay Products
  - Brick
  - Tiles
  - Earthenware
- Cement
- Mortar
- Concrete
- Timber
- Plastics
- Glass
- Paints etc
- Practices
  - Sample collection of building materials

#### • Design Process

- Data Collections
- Analysis
- Synthesis
- Evaluation
- Execution
- Practices
  - Design Process for projects like office, Restaurant, etc...





# Interior Architecture & Design

## Design Elements

- Flooring
- walls
- Ceiling
- Arches
- Lintels
- Windows
- Doors
- Carpentry
- Stair case
- Ramp
- Practices
  - Exercise on type & details of flooring ,partitions, false ceiling , doors, windows, staircase, etc..

## Space Planning

- Living Room
- Dining Room
- Bed Room
- Bath Room
- Kitchen

## Human Dimension

- Anthropometry , Accesibility and Barrier-free codes
- Practices
  - Anthropometric details for various projects

## Service - 1

### Plumbing

- Water Supply
- Drainage
- Plumbing System
- Sanitary Fitting
- Bathroom Accessories

## Lighting

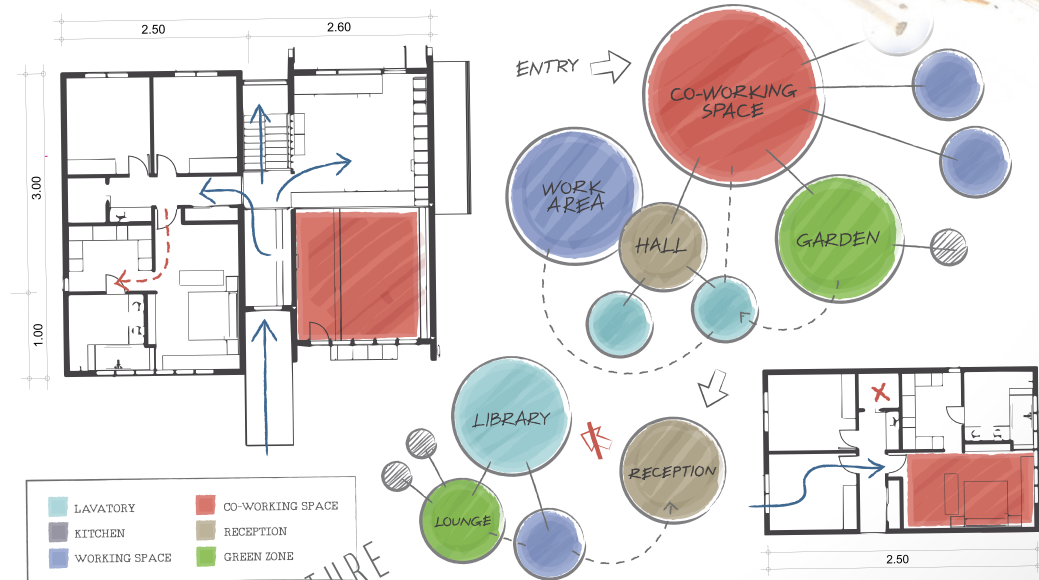
- Factors affecting Light
- Natural Lighting
- Artificial Lighting
- Lighting Fixtures
- Lighting Accessories
- Electrical , data and telecommunication system

## Practices

- Exercises on lighting & plumbing

## Design

- Single room project - like coffee bar, Gift shop, kitchen toilet, bedroom ,etc.
- Practices
  - Plan , sections & detailing, for the design projects



ARCHITECTURE

# Interior Architecture & Design

## MODULE -2

### • Design Elements

- Elevators
- Escalators
- Practices
  - .Exercise on types and details of Elevators

### • Service - 2

- Air Conditioning
- Acoustics & Sound insulation
- Water proofing , Damp proofing & Termite Proofing
- Thermal Insulation
- Fire Fighting
- Security Systems
- Practices
  - . Exercise on types and details of services and collection of relevant product pamphlets

### • Interior Landscape

- Elements & Properties of landscape
- Categories of plants
- Design Methodology
- Practices
  - . Exercises on landscape design of office interiors, etc.

### • Estimation & Specification

- PRACTICES
  - .Estimation & Specification for small projects

### • Professional Practices, regulations, codes of conduct

- Rules & Regulations of Indian Institute of Interior Design (IIID)
- Code Of Conduct

### • Project Management

- Practices
  - .Exercise on PERT , CPM



### • Design

- Residence
- Commercial Space (Office , Showroom, Hotel, Restaurant, etc.)
- Practices
  - .Plan,Section & detailing for the projects

### • Furniture Fixture & Equipments

- Types of Furniture
- Selection Of Furniture & Fabrics
- Furniture Dimension

### • Furniture style

- Italian
- French
- American
- English
- Contemporary

### • Final project

- Practices
  - .Plan , section, elevation , views, perspectives and detailing for the chosen project

### • Computer Aided Design & Design Presentation

- AutoCAD, 3Dmax, Photoshop

### • Computer Aided Drafting

- Introduction
  - . History Of Drawing
  - . Engineering Drawing & Design
  - . Engineering drawing today
  - . Computer Aided Design & Crafting
  - . Computer Aided Design & Manufacturing
  - . The Educational Value Of Engineering Drawing
  - . Organization Of Text

### • Manual Drawing Equipment & Usage

- Scales

### • Principles Of Engineering Drawing

- Drawing Sheet
- Title Block
- Scales
- Line Thickness



# Interior Architecture & Design

## • Assignments (Plan Drafting) Computer Aided Design & Drafting

- . File Format
- . History Of \*.dwg
- . Printers & plotters
- . Digitizing
- . Introduction to CAD Software

## • Projection

- . Principels & Methods Of Projects
- . First Angle Projection vs Third Angle Projection
- . Isometric Projection
- . Perspective Projection

## • Assignment ( Isometric & Perspective Projection)

## • Sheet Layout

## • Annotations

- . Lettering & Dimensions

## • Geometric Tolerance

## • How to read a Construction Plan

- . Site Plan
- . Floor Plan
- . Elevation & Section Views

## • Overview Of Vector graphics

## • Introduction to AutoCAD

- . History
- . GUI

## • File Management

## • Drawing Setting

## • Preparing Orthographic Drawings

## • Assignment (Plan, Elevation & SectionViews)

## • Object Selection Methods

## • Modifying the Existing drawings

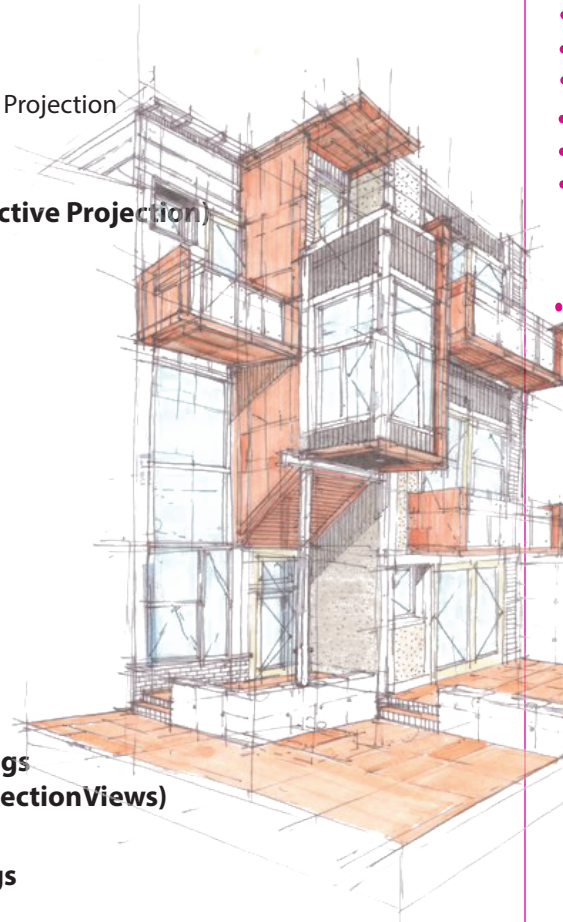
## • Isometric Drawings

## • Perspective Drawings

## • Assignments (building elevation & room Interiors : Perspive view)

## • Object Properties

## • Annotations- Text



## • Display Control

## • Layer Management

## • Hatching Utilities

## • Inquiry Commands

## • Annotations-Dimension

## • Construction Lines

## • Working with repeated Objects

## • Working with a team

## • Automatic BOM creation

## • How to make printouts

## • E-transfer

## • Assignments (preparing Approved Drawing)

## • Computer-Aided Image Rendering & Compositing

### Introduction

- . Vector & Raster
- . Color correction & Editing
- . Resolution
- . Printig Document
- . Web

### File Formats

- . Bmp, Gif, Jpeg, Png, Psd, TGA, TIFF, PDF

### Marquee Tool

- . Rectangular , Elliptical
- . Single row, Single column

### Lasso Tool

- . Polygonal, Magnetic
- . Magic wand, Quick selection

### Assignment (selecting the image using various tool)

### Crop,Slice tool

### Eye dropper tool

- . Color sampler tool

### Ruler,note & count tool

### Transforming the images

- . Scale, Rotate, Skew
- . Distort,Perspective , Warp

### Color

- . Foreground & Background colors

### paint bucket, pattern fill

### Painting tools

### Pencil Tool

### Color replacement tool

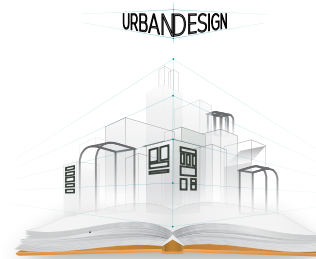




# Interior Architecture & Design

- Brush Tool
  - History Brush tool
  - Art History Brush tool
  - Healing Brush tool
  - Spot healing Brush Tool
  - Patch tool & Red eye tool
- Clone Stamp tool
  - Clone stamp tool
  - Pattern Stamp tool
- Erase Tool
  - Background eraser tool
  - Magic eraser tool
- Blur Tool ( effects tool )
  - Sharpen & Smudge Tool
- Dodge Tool ( effects tool )
  - Burn & Sponge tool
- Gradient Tool
  - Linear, Radial, Angle gradient
  - Reflected & Diamond Gradient
- Vector Tools
  - Pen Tools
  - Free form pen tool
  - Add & delete anchor point tool
  - Convert point tool
  - Selection Tool
  - Path & Direct selection tool
  - custom Shapes
- Assignment (creating greenery, landscaping & Decorating layouts)
- Text Tool
  - Horizontal & Vertical
  - Horizontal type mask & vertical type mask

- Shapes
  - Rectangle & Rounded rectangle tool
  - Ellips, Polygon & Line tool
  - Custom Shape tool
  - Assignment (creating objects-furniture)
- Working with Image
- Color Correction, Image Adjustments
  - Brightness & Contrast
  - Levels & Curves
  - Exposure; Offset; Gamma Correction
- Vibrance
- Hue / Saturation
  - Color balance, Black & White
  - Photo filter , Channel mixture
  - Invert, Posterize & Gradient map
  - Selective color
  - Shadow/highlights,Variations
  - Match colors & Replace color
  - Equalize & apply images
  - Rotatecanvas
  - Saturation & Desaturation Colors
  - Rotate Canvas
- Assignment (Creating Fire effects, Converting black)
- Layer
  - Layer Style
  - Blending & Group
  - Mask & Hide
  - Flatten Image & Merge
  - Link & Unlink Layers
  - Arrange, Align, Distribute
- Image Mode
  - Bitmap Mode
  - Grayscale Mode
  - Duotone Mode
  - RGB & CMYK
  - Assignments (Enhancing rendered images)
- Filter Gallery
  - Artistic Filters & Blur Effects
  - Brush Stroke Filters
  - Distort Filters & Noise filters
  - Pixelate Filters & Render filters
  - Sharpen filters & Texture filters
  - Vanishing Point
  - Assignments (creating Textures for interiors)



- Other Applications
  - PDF Presentation
  - 3D Material Settings, Render Settings
- Automate
  - Fit Image
  - Merge HDR
  - Photo merge
- Assignments
  - Creating & Optimizing Web Layout
- **Computer Aided Design Visualization**
  - Introduction to 3ds max
  - Project work flow
  - Interface and view port controls
  - File formats
- Primitives
  - Standard Primitives
  - Extended Primitives
  - Keyboard entry
- Selection Tools
  - Selection Methods
  - Transforms and co-ordinate system
- Utility Tools
  - Unit Setup
  - Hierarchy
  - Snaps
  - Align & Quick Tool
  - Mirror, Array and Spacing Tools
  - Group and Ungroup
  - Layer Manager
  - Practice Project Worksheet
- Parametric Modifiers
  - 3D Modifiers
  - Bend, Twist & Tapper
  - Noise, Relax & Skew
- Shapes
  - 2D Shapes & Modifiers
  - AEC Objects

# Interior Architecture & Design

## Compound Objects

- Shape Boolean
- Loft
- Deforming Loft Objects- Scale, Twist
- Teeter, Bevel, Fit
- Practice Project Worksheet

## Lights

- Standard Lights
- Omni, Target & free spot
- Target & Free Direct
- Sky Light

## Photometric Lights

- Free & Target Light
- Clone

## Alignments

- Copying Object
- Array
- Spacing Tool
- Normal Align
- Align View
- Align Camera
- Loft Objects
- Practice Project Worksheet

## Materials

- Material Editor- Tools in Material Editors
- Shading Basic Parameters
- Extended Parameters
- Saving Materials

## Camera

- Camera- Free, Target
- Depth of Field, Motion Blur
- Animating Camera in a path & Free Movement
- Navigating the Camera using Keyboard

## Rendering- Scan line, Mental Ray

- Rendering basics- Out image sizes
- Export as JPEG
- File handling, Archive
- Summery Info
- View Image File
- Hold, Fetch
- File Handling functions
- Practice project worksheet

## Course Highlights

- **Evaluation:** Projects & Subjects
- **Project:** Every Candidates must submit a project at the end of the training period
- **Practice Sessions:** Practice sessions and Exercise to prepare you for the real world



## Course Details

**Duration** 480hrs

**Regular :** 2hrs / day  
5 days / week 48 weeks

**Fast Track** 4 hrs / day  
5 days / week 24 weeks

### Timing

**Regular :** 7am - 9 am  
9 am - 11 am  
11 am - 1am  
2 pm - 4pm  
4 pm - 6 pm  
6 pm - 8 pm

**Fast track:** 9 am - 1 pm  
2 pm - 6 pm





### **Administrative Office**

Office No.8C & 8D,8th Floor  
GEE GEE Crystal, Door No. 91  
Dr.Radhakrishnan Salai, Mylapore  
Chennai- 600 004  
Ph: 044 - 4596 6100 -134  
Fax: 044 - 2847 3505  
email: info@freamzone.co.in  
www.dreamzone.co.in

All imagecourtesy to respective creators.  
All brand names and trademarks belong to  
respective owners.  
Information in this brochure may  
chnage without notice.

\*Selected course available at selected Centers only  
\*Sri Lanka \*Bangladesh \*Bhutan \*Malaysia \*Qatar \*Nigeria \*Oman \*Sharjah \*Maldives

### **Career Opportunities**

The diversity of the course structure reflects the various  
career oppurtunities available to our students at the following sectors:t

- 1.Architectural Firms
- 2.Interior Designerfirms
- 3.Construction Firms
- 4.Builders & Promoters
- 5.Furniture Manufactures
- 6.Project Managers
- 7.Advertising Agencies
- 8.Educational service
- 9.Set Design For Film & Tv Media
- 10.Product Supply Industry
- 11.Theatre Design
- 12.Goverment Sectors
- 13.Own Bussiness or freelancing
- 14.Higher Studies

